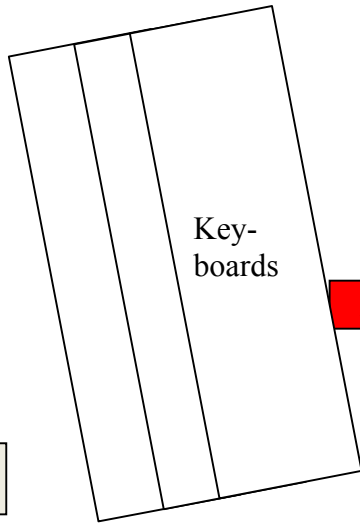


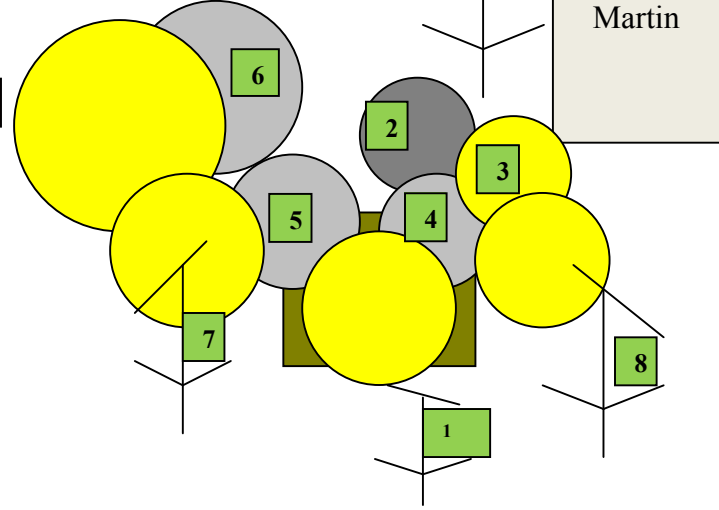
Flippmanns Kanalbelegung & Stagerider

CH	GRP	Signal	Mikro	Monitor
1	1/2	Bass Drum	dyn.	1/2/6
2	1/2	Snare	dyn.	6
3	1/2	HiHat	kond.	
4	1/2	High Tom	dyn.	
5	1/2	Mid Tom	dyn.	
6	1/2	Low Tom	dyn.	
7	1/2	Over Head	kond.	
8	1/2	Over Head	kond.	
9	3/4	Key	Di (vorh.)	2/3/4/5/6
10	3/4	Key	Di (vorh.)	2/3/4/5/6
11	3/4	Orgel	Di (vorh.)	2/3/4/5/6
12	3/4	Orgel	Di (vorh.)	2/3/4/5/6
13	L/R	Bass	Di	6
14	L/R	Git. L.	dyn.	3/4/6
15	L/R	Git. R.	dyn.	1/2/5/6
16	L/R	Akku L.	Active Di	1/2/3/4/5/6
17	L/R	Ukulele R.	Active Di	1/2/3/4/5/6
18	5/6	Vocs. Key (Ralf)	Headset / DI	5
19	L/R	Vocs. Links (Mausi)	WI SM58	1
20	L/R	Vocs. L-Mitte (Keven)	WI SM58	2
21	5/6	Vocs. Mitte (Peter)	WI Beta57	1/2/3/4/5/6
22	5/6	Vocs. Sax	WI SM58	4
23	5/6	Vocs. Drums (Martin)	SM58	6
24	5/6	Sax	Beta57	4

Di-Out Key	9
Di-Out Key	10
Di-Out Orgel	11
Di-Out Orgel	12
Headset Ralf	18
InEar Mon. 4 Ralf (XLR-Kabel)	

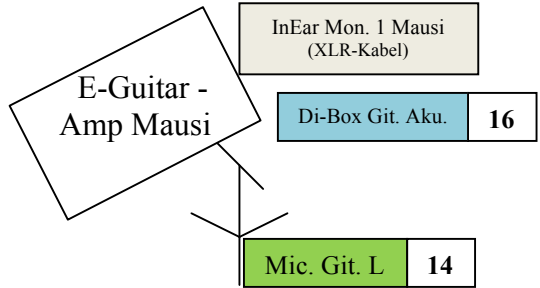


220V

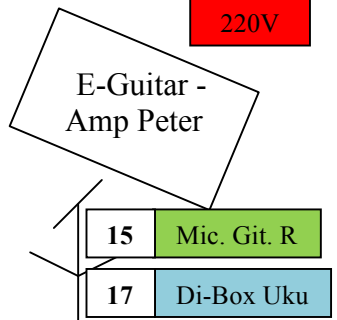


220V	Di-Out Bass	13
Bass-Amp Keven		
InEar Mon. 5 Keven (XLR-Kabel)		

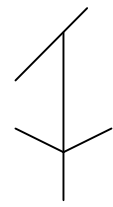
220V



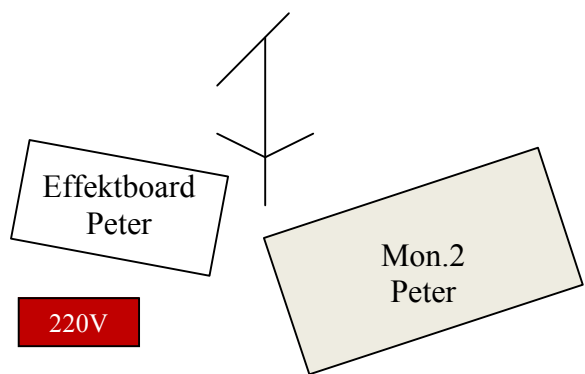
220V



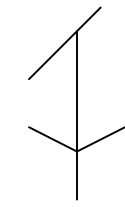
Sender Vocal Mausi	19
--------------------	----



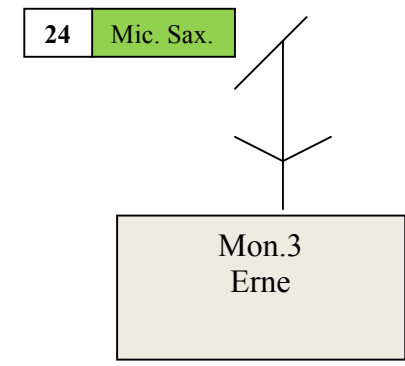
Sender Vocal Peter	21
--------------------	----



Sender Vocal Keven	20
--------------------	----



22	Sender Vocal Erne
----	-------------------



Legende	Schwarze Schrift: wird benötigt / graue Schrift: bringt die Band mit
eigene Stromversorgung	4x
externe Stromversorgung	1x
Bassdrum	1x
Snear	1x
Toms	3x
Becken	1x HiHat / 1x Ride / 3x Crash
Monitor	2x / 3x InEar → XLR-Kabel benötigt
Instrumentenmikrofone	2x BassDrum / 1x Snare / 1x HiHat / 3x Tom / 2x Overhead / 2x Git. / (1x Sax)
Di-Out on board	5x
Di-Box	2x
Vocalmikrofone	2x Sendermic / 3x Kabelmic / 1x Headset